

# CLASSWAY

WALL TO WALL  
CARPET

LOOP PILE

# DIVINE<sup>®</sup>

COMPLETE CARPET SOLUTION



## BEGISH TEAL

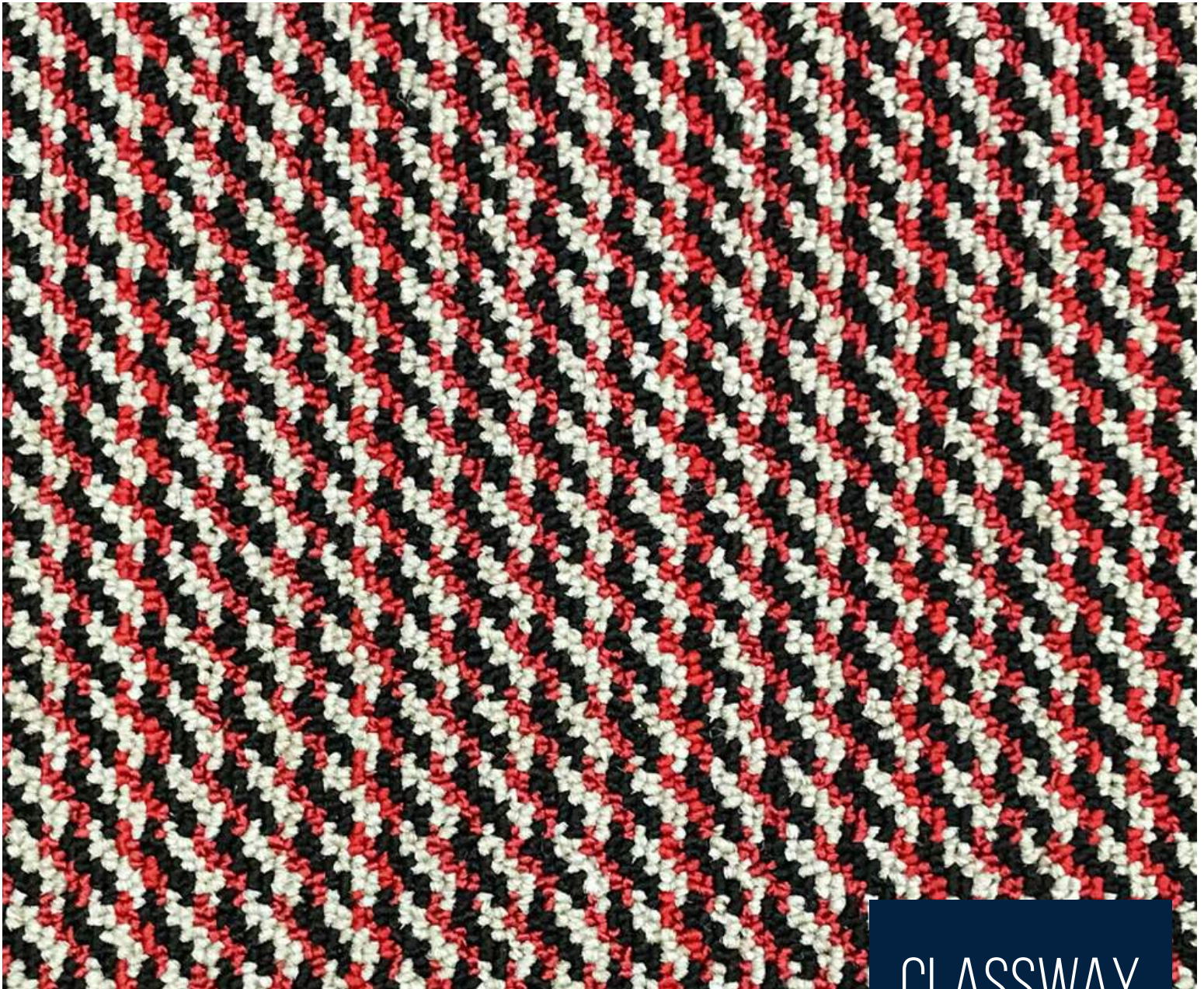
Fabric Type	Tufted 1/10" Plain Level Loop	Pile Height	5 MM
Primary Backing	Woven PP	Total Height	7 MM
Secondary Backing	Action Back	Pile Weight	600 GSM
Width	398 CM	Total Weight	1700 GSM
Pile Content	100% Solution Dyed Polypropylene	Knots/Sqm	157600

# CLASSWAY

WW CLASSWAY

WALL TO WALL  
CARPET

LOOP PILE



## REDDISH BLACK

Fabric Type	Tufted 1/10" Plain Level Loop	Pile Height	5 MM
Primary Backing	Woven PP	Total Height	7 MM
Secondary Backing	Action Back	Pile Weight	600 GSM
Width	398 CM	Total Weight	1700 GSM
Pile Content	100% Solution Dyed Polypropylene	Knots/Sqm	157600

# CLASSWAY

WW CLASSWAY

WALL TO WALL  
CARPET

LOOP PILE

KINDLY CHECK OUR APP FOR QUANTITY AVAILABLE BEFORE ORDERING



## BEGISH RED

Fabric Type	Tufted 1/10" Plain Level Loop	Pile Height	5 MM
Primary Backing	Woven PP	Total Height	7 MM
Secondary Backing	Action Back	Pile Weight	600 GSM
Width	398 CM	Total Weight	1700 GSM
Pile Content	100% Solution Dyed Polypropylene	Knots/Sqm	157600

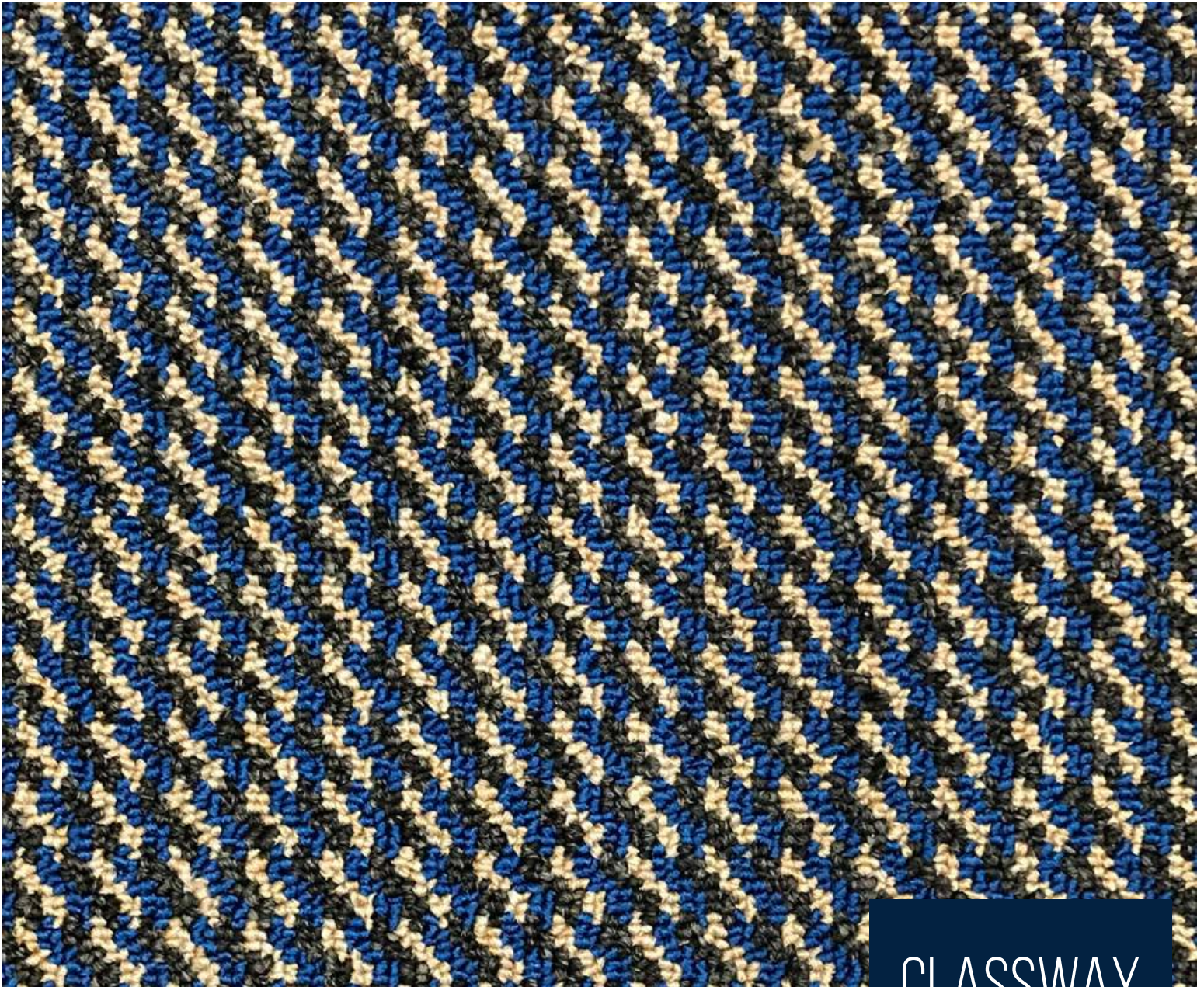
# CLASSWAY

WW CLASSWAY

WALL TO WALL  
CARPET

LOOP PILE

KINDLY CHECK OUR APP FOR QUANTITY AVAILABLE BEFORE ORDERING



## NAVY BLUE

Fabric Type	Tufted 1/10" Plain Level Loop	Pile Height	5 MM
Primary Backing	Woven PP	Total Height	7 MM
Secondary Backing	Action Back	Pile Weight	600 GSM
Width	398 CM	Total Weight	1700 GSM
Pile Content	100% Solution Dyed Polypropylene	Knots/Sqm	157600

# CLASSWAY

WW CLASSWAY

WALL TO WALL  
CARPET

LOOP PILE



## BEGISH BLUE

Fabric Type	Tufted 1/10" Plain Level Loop	Pile Height	5 MM
Primary Backing	Woven PP	Total Height	7 MM
Secondary Backing	Action Back	Pile Weight	600 GSM
Width	398 CM	Total Weight	1700 GSM
Pile Content	100% Solution Dyed Polypropylene	Knots/Sqm	157600

# CLASSWAY

WW CLASSWAY

WALL TO WALL  
CARPET

LOOP PILE



## BEGISH BROWN

Fabric Type	Tufted 1/10" Plain Level Loop	Pile Height	5 MM
Primary Backing	Woven PP	Total Height	7 MM
Secondary Backing	Action Back	Pile Weight	600 GSM
Width	398 CM	Total Weight	1700 GSM
Pile Content	100% Solution Dyed Polypropylene	Knots/Sqm	157600

# CLASSWAY

WW CLASSWAY

WALL TO WALL  
CARPET

LOOP PILE



## BLUISH BLACK

Fabric Type	Tufted 1/10" Plain Level Loop	Pile Height	5 MM
Primary Backing	Woven PP	Total Height	7 MM
Secondary Backing	Action Back	Pile Weight	600 GSM
Width	398 CM	Total Weight	1700 GSM
Pile Content	100% Solution Dyed Polypropylene	Knots/Sqm	157600

# CLASSWAY

WW CLASSWAY

WALL TO WALL  
CARPET

LOOP PILE

KINDLY CHECK OUR APP FOR QUANTITY AVAILABLE BEFORE ORDERING





## BEGISH BLACK

Fabric Type	Tufted 1/10" Plain Level Loop	Pile Height	5 MM
Primary Backing	Woven PP	Total Height	7 MM
Secondary Backing	Action Back	Pile Weight	600 GSM
Width	398 CM	Total Weight	1700 GSM
Pile Content	100% Solution Dyed Polypropylene	Knots/Sqm	157600

# CLASSWAY

WW CLASSWAY

WALL TO WALL  
CARPET

LOOP PILE

KINDLY CHECK OUR APP FOR QUANTITY AVAILABLE BEFORE ORDERING

# DIVINE<sup>®</sup>

COMPLETE CARPET SOLUTION

[www.divineglobal.in](http://www.divineglobal.in)

