

WALL TO WALL
CARPET

MARILYN

CUT PILE

DIVINE[®]

COMPLETE CARPET SOLUTION



MARILYN 29 OLIVE

Construction	5/64" cut pile	Total Weight	± 2,100 g/m ²
Pile Fiber	100% PA IMPREL®	Tuft Density/m ²	± 305 000
Backing	Twinback	Light Fastness	≥ 5
Pile Height	± 7 mm	Water Resistance	≥ 4-5
Total Height	± 10mm	Thermal Resistance	± 0,15 m ² K/W
Pile Weight	± 1,155 g/m ²	Fire Class	Cfl-s1 (EN 13501-1) if glued

WALL TO WALL
CARPET

MARILYN

CUT PILE



MARILYN 31 CREAM

Construction	5/64" cut pile	Total Weight	± 2,100 g/m ²
Pile Fiber	100% PA IMPREL®	Tuft Density/m ²	± 305 000
Backing	Twinback	Light Fastness	≥ 5
Pile Height	± 7 mm	Water Resistance	≥ 4-5
Total Height	± 10mm	Thermal Resistance	± 0,15 m ² K/W
Pile Weight	± 1,155 g/m ²	Fire Class	Cfl-s1 (EN 13501-1) if glued

WALL TO WALL
CARPET

MARILYN

CUT PILE



MARILYN 33 WILLOW

Construction	5/64" cut pile	Total Weight	± 2,100 g/m ²
Pile Fiber	100% PA IMPREL®	Tuft Density/m ²	± 305 000
Backing	Twinback	Light Fastness	≥ 5
Pile Height	± 7 mm	Water Resistance	≥ 4-5
Total Height	± 10mm	Thermal Resistance	± 0,15 m ² K/W
Pile Weight	± 1,155 g/m ²	Fire Class	Cfl-s1 (EN 13501-1) if glued

WALL TO WALL
CARPET

MARILYN

CUT PILE



MARILYN 38 SESAME

Construction	5/64" cut pile	Total Weight	± 2,100 g/m ²
Pile Fiber	100% PA IMPREL®	Tuft Density/m ²	± 305 000
Backing	Twinback	Light Fastness	≥ 5
Pile Height	± 7 mm	Water Resistance	≥ 4-5
Total Height	± 10mm	Thermal Resistance	± 0,15 m ² K/W
Pile Weight	± 1,155 g/m ²	Fire Class	Cfl-s1 (EN 13501-1) if glued

WALL TO WALL
CARPET

MARILYN

CUT PILE



MARILYN 42 UMBER

Construction	5/64" cut pile	Total Weight	± 2,100 g/m ²
Pile Fiber	100% PA IMPREL®	Tuft Density/m ²	± 305 000
Backing	Twinback	Light Fastness	≥ 5
Pile Height	± 7 mm	Water Resistance	≥ 4-5
Total Height	± 10mm	Thermal Resistance	± 0,15 m ² K/W
Pile Weight	± 1,155 g/m ²	Fire Class	Cfl-s1 (EN 13501-1) if glued

WALL TO WALL
CARPET

MARILYN

CUT PILE



MARILYN 49 CLAY

Construction	5/64" cut pile	Total Weight	± 2,100 g/m ²
Pile Fiber	100% PA IMPREL®	Tuft Density/m ²	± 305 000
Backing	Twinback	Light Fastness	≥ 5
Pile Height	± 7 mm	Water Resistance	≥ 4-5
Total Height	± 10mm	Thermal Resistance	± 0,15 m ² K/W
Pile Weight	± 1,155 g/m ²	Fire Class	Cfl-s1 (EN 13501-1) if glued

WALL TO WALL
CARPET

MARILYN

CUT PILE



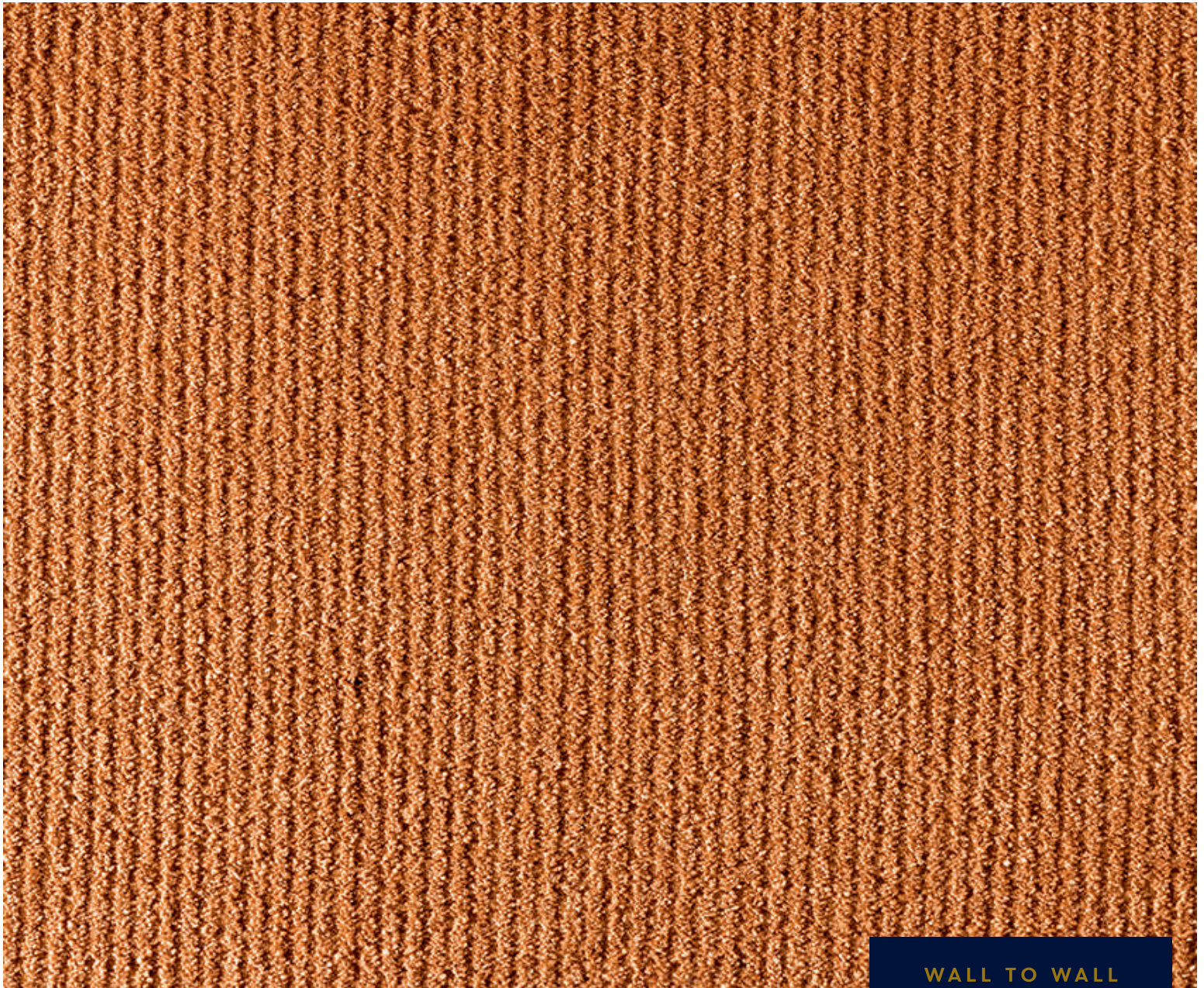
MARILYN 52 ANTIQUE

Construction	5/64" cut pile	Total Weight	± 2,100 g/m ²
Pile Fiber	100% PA IMPREL®	Tuft Density/m ²	± 305 000
Backing	Twinback	Light Fastness	≥ 5
Pile Height	± 7 mm	Water Resistance	≥ 4-5
Total Height	± 10mm	Thermal Resistance	± 0,15 m ² K/W
Pile Weight	± 1,155 g/m ²	Fire Class	Cfl-s1 (EN 13501-1) if glued

WALL TO WALL
CARPET

MARILYN

CUT PILE



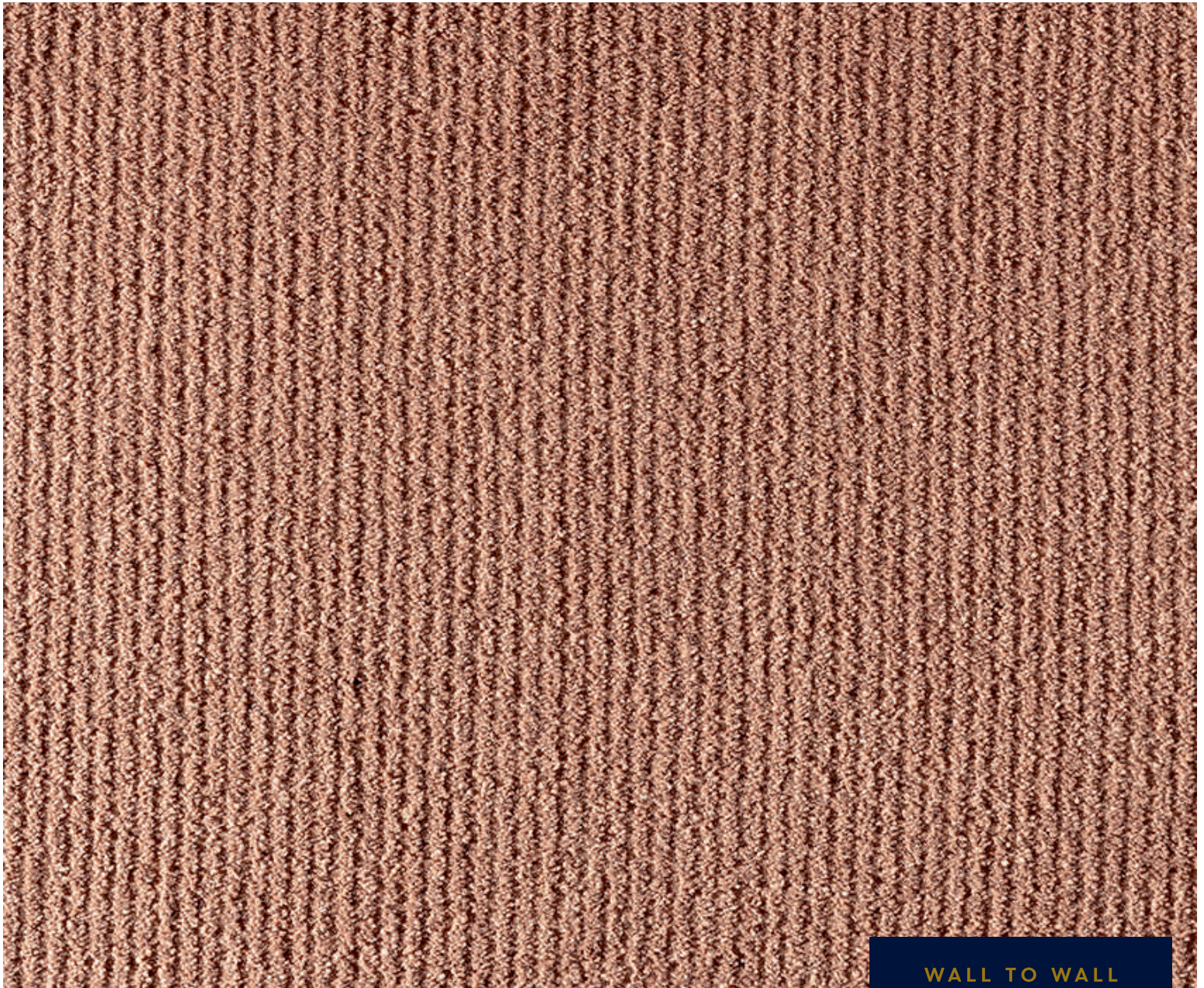
MARILYN 56 GLAZE BROWN

Construction	5/64" cut pile	Total Weight	± 2,100 g/m ²
Pile Fiber	100% PA IMPREL®	Tuft Density/m ²	± 305 000
Backing	Twinback	Light Fastness	≥ 5
Pile Height	± 7 mm	Water Resistance	≥ 4-5
Total Height	± 10mm	Thermal Resistance	± 0,15 m ² K/W
Pile Weight	± 1,155 g/m ²	Fire Class	Cfl-s1 (EN 13501-1) if glued

WALL TO WALL
CARPET

MARILYN

CUT PILE



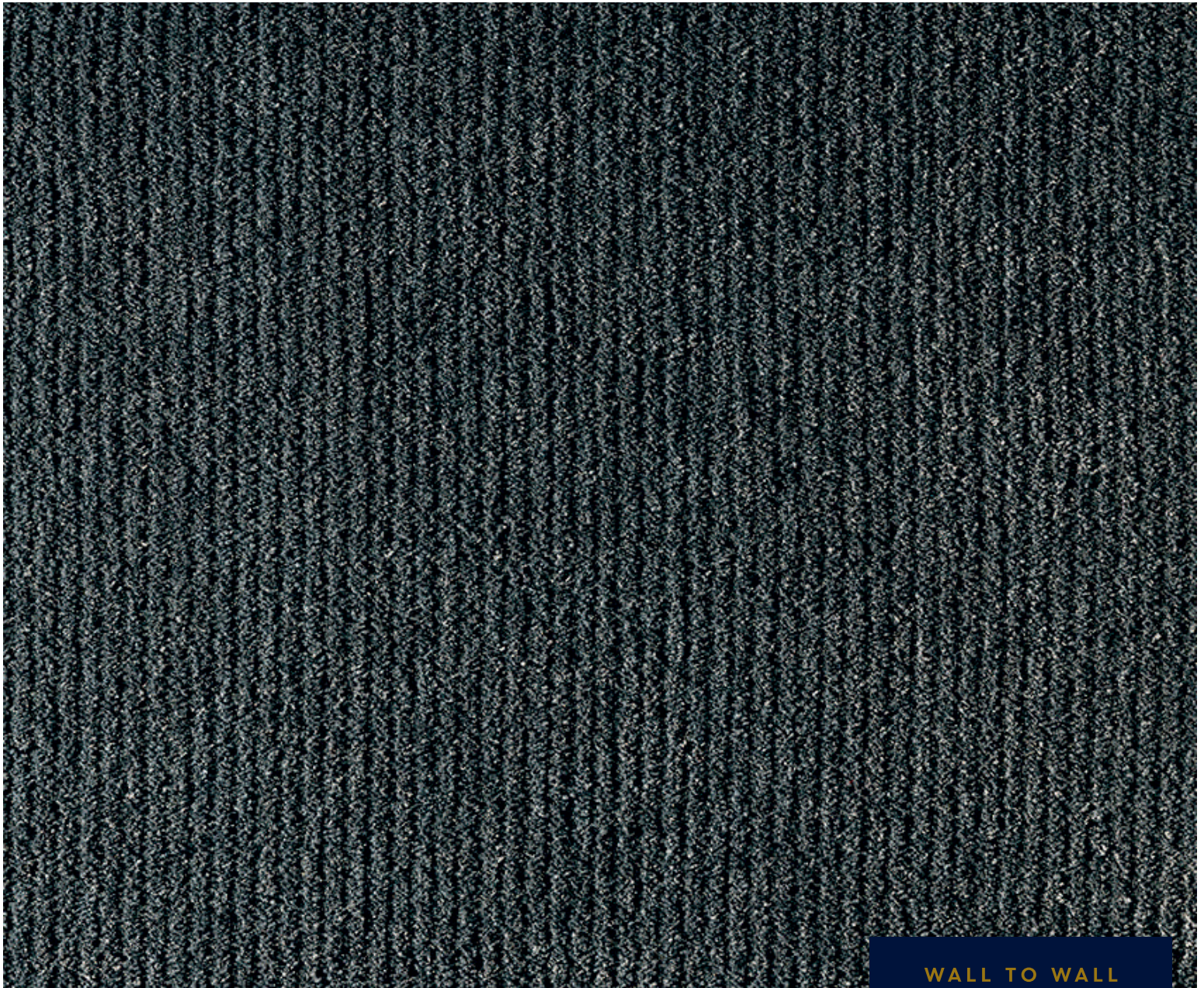
MARILYN 63 FAWN

Construction	5/64" cut pile	Total Weight	± 2,100 g/m ²
Pile Fiber	100% PA IMPREL®	Tuft Density/m ²	± 305 000
Backing	Twinback	Light Fastness	≥ 5
Pile Height	± 7 mm	Water Resistance	≥ 4-5
Total Height	± 10mm	Thermal Resistance	± 0,15 m ² K/W
Pile Weight	± 1,155 g/m ²	Fire Class	Cfl-s1 (EN 13501-1) if glued

WALL TO WALL
CARPET

MARILYN

CUT PILE



MARILYN 97 GUNMETAL

Construction	5/64" cut pile	Total Weight	± 2,100 g/m ²
Pile Fiber	100% PA IMPREL®	Tuft Density/m ²	± 305 000
Backing	Twinback	Light Fastness	≥ 5
Pile Height	± 7 mm	Water Resistance	≥ 4-5
Total Height	± 10mm	Thermal Resistance	± 0,15 m ² K/W
Pile Weight	± 1,155 g/m ²	Fire Class	Cfl-s1 (EN 13501-1) if glued

WALL TO WALL
CARPET

MARILYN

CUT PILE

DIVINE[®]

COMPLETE CARPET SOLUTION