

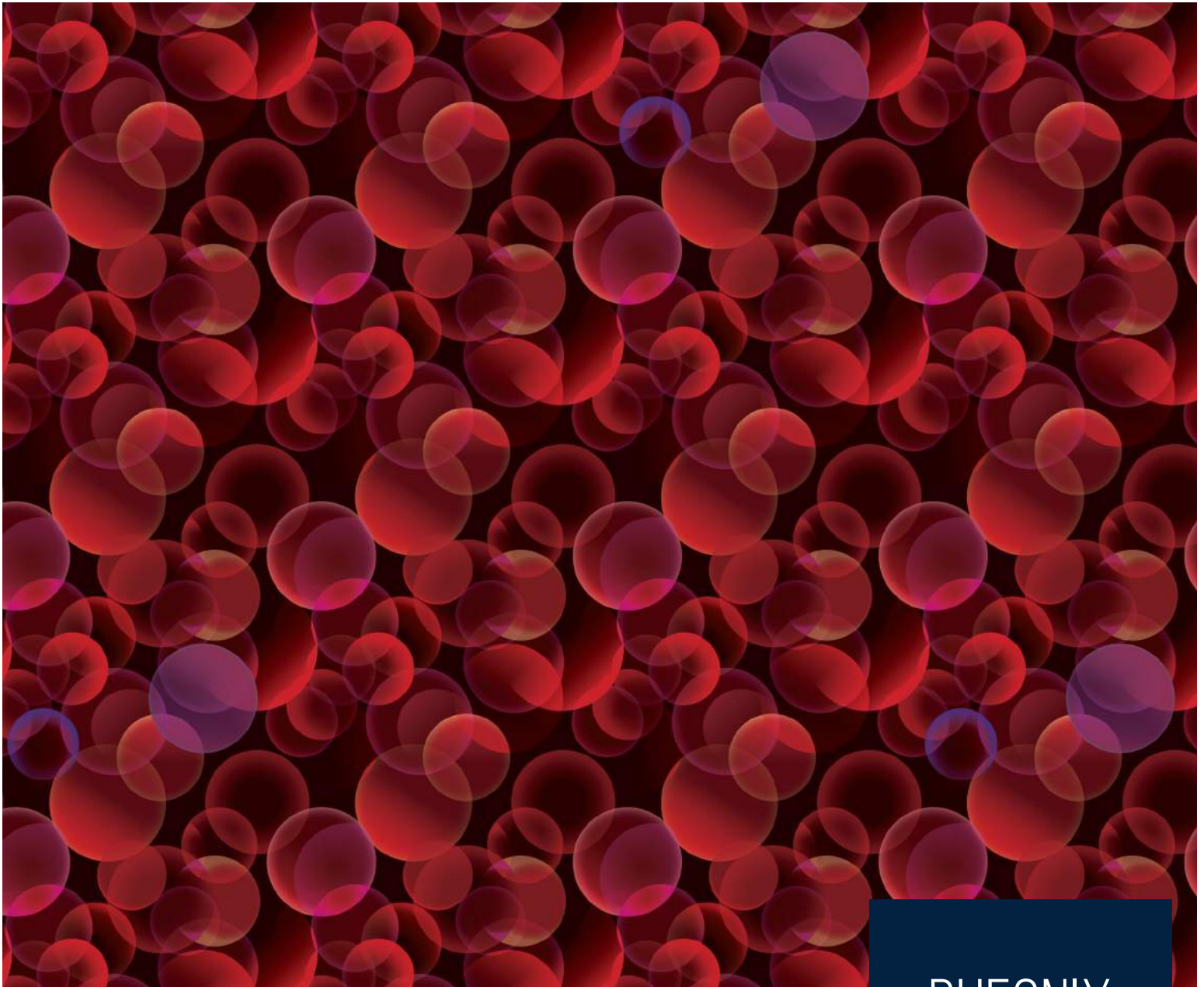
PHEONIX

WALL TO WALL
CARPET

LOOP PILE PRINTED

DIVINE[®]

COMPLETE CARPET SOLUTION



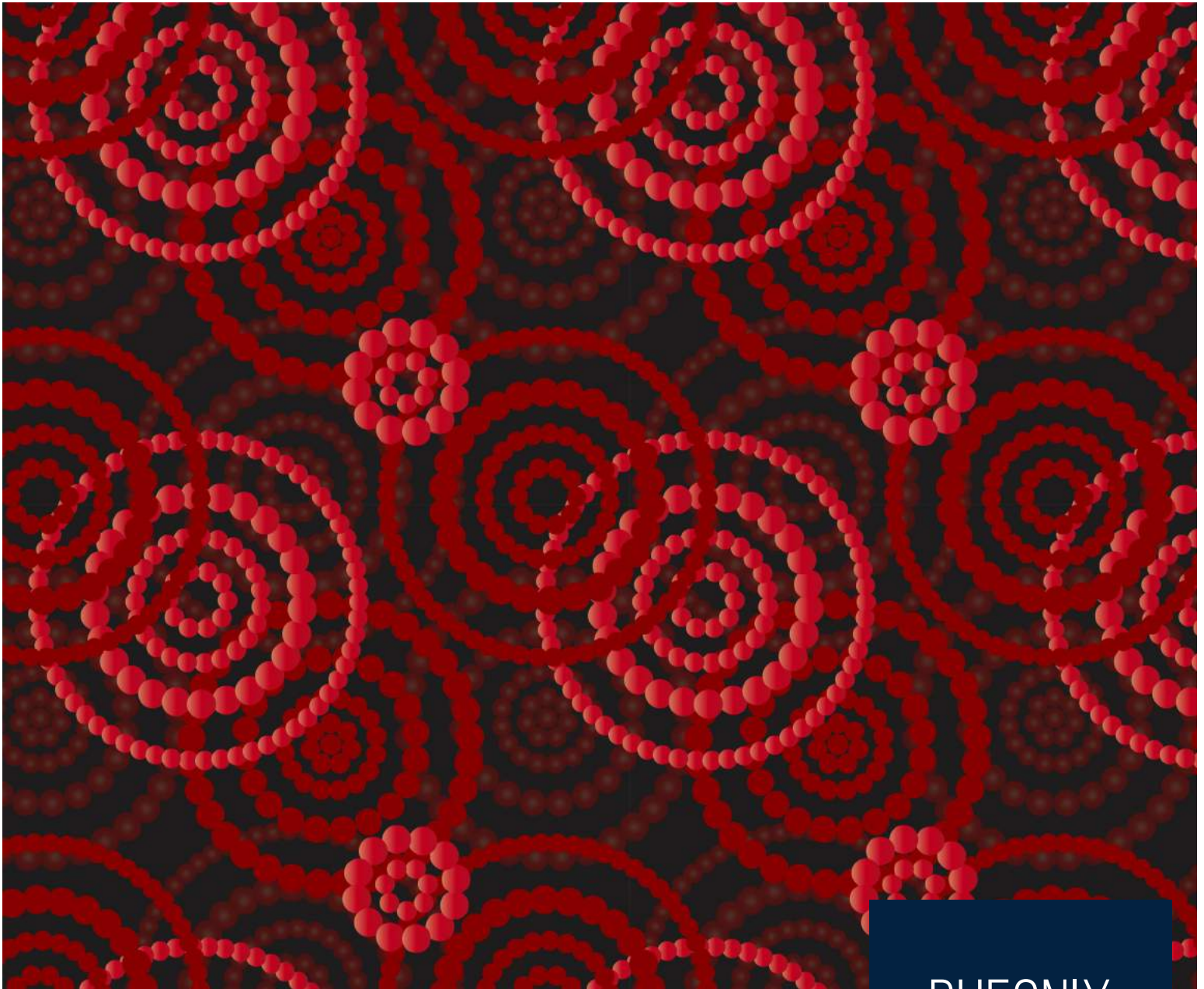
PHONEX MOONLIGHT

Fabric Type	Tufted 1/10" Cut Pile	Pile Height	7 MM
Primary Backing		Total Height	9 MM
Secondary Backing		Pile Weight	800 GSM
Width	400 CM	Total Weight	1850 GSM
Pile Content	100% Nylon (Printed)	Knots/Sqm	

PHEONIX

WALL TO WALL
CARPET

CUT PILE PRINTED



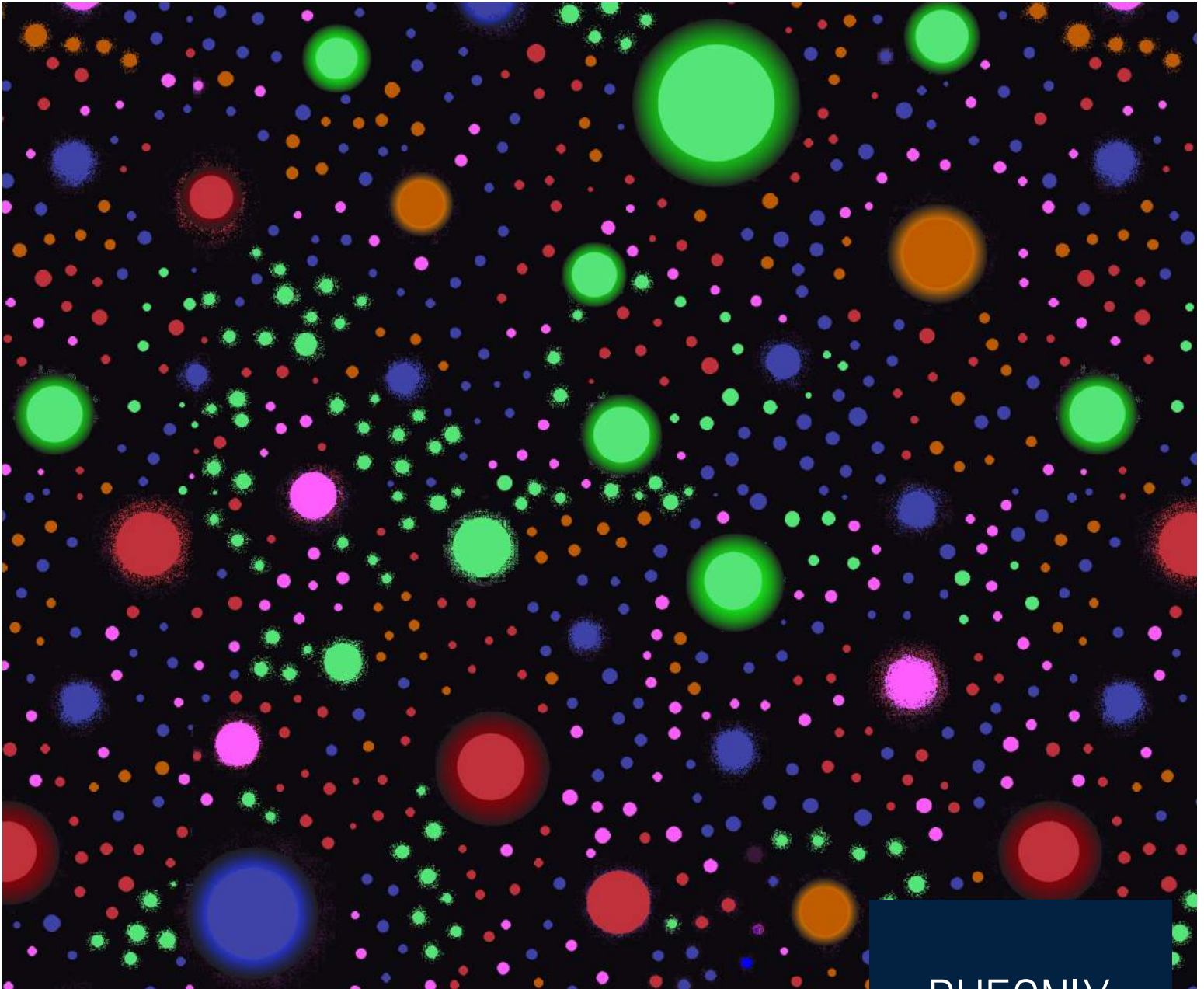
PHONEX BRAVO

Fabric Type	Tufted 1/10" Cut Pile	Pile Height	7 MM
Primary Backing		Total Height	9 MM
Secondary Backing		Pile Weight	800 GSM
Width	400 CM	Total Weight	1850 GSM
Pile Content	100% Nylon (Printed)	Knots/Sqm	

PHEONIX

WALL TO WALL
CARPET

CUT PILE PRINTED



PHONEX URBAN PLANET

Fabric Type	Tufted 1/10" Cut Pile	Pile Height	7 MM
Primary Backing		Total Height	9 MM
Secondary Backing		Pile Weight	800 GSM
Width	400 CM	Total Weight	1850 GSM
Pile Content	100% Nylon (Printed)	Knots/Sqm	

PHEONIX

WALL TO WALL
CARPET

CUT PILE PRINTED



PHONEX SPINNY

Fabric Type	Tufted 1/10" Cut Pile	Pile Height	7 MM
Primary Backing		Total Height	9 MM
Secondary Backing		Pile Weight	800 GSM
Width	400 CM	Total Weight	1850 GSM
Pile Content	100% Nylon (Printed)	Knots/Sqm	

PHEONIX

WALL TO WALL
CARPET

CUT PILE PRINTED

DIVINE[®]

COMPLETE CARPET SOLUTION

www.divineglobal.in

