



RUNWAY

CARPET TILES

DIVINE[®]

COMPLETE CARPET SOLUTION



CT RUNWAY 847 LIGHT BROWN

Construction	LOOP	Number of Tufts	232260 /m2
Pile Fiber Composition	100% Olefin	Tufting Gauge	1/12"
Dye Method	Solution Dyed	Primary Backing	Non-Woven
Pile Weight	800 g/m2	Secondary Backing	StableShield-100% Vinyl
Total Weight	4800 gm	Tile Size	50 x 50 cm
Pile Height	3.5mm	Pile Treatment	INVISTA Anti-Soil (On Order)
Total Tile Height	7.5 mm		

RUNWAY

50X50CM
SQUARE TILE

CARPET TILES

KINDLY CHECK OUR APP FOR QUANTITY AVAILABLE BEFORE ORDERING



CT RUNWAY 858 DARK BLUE

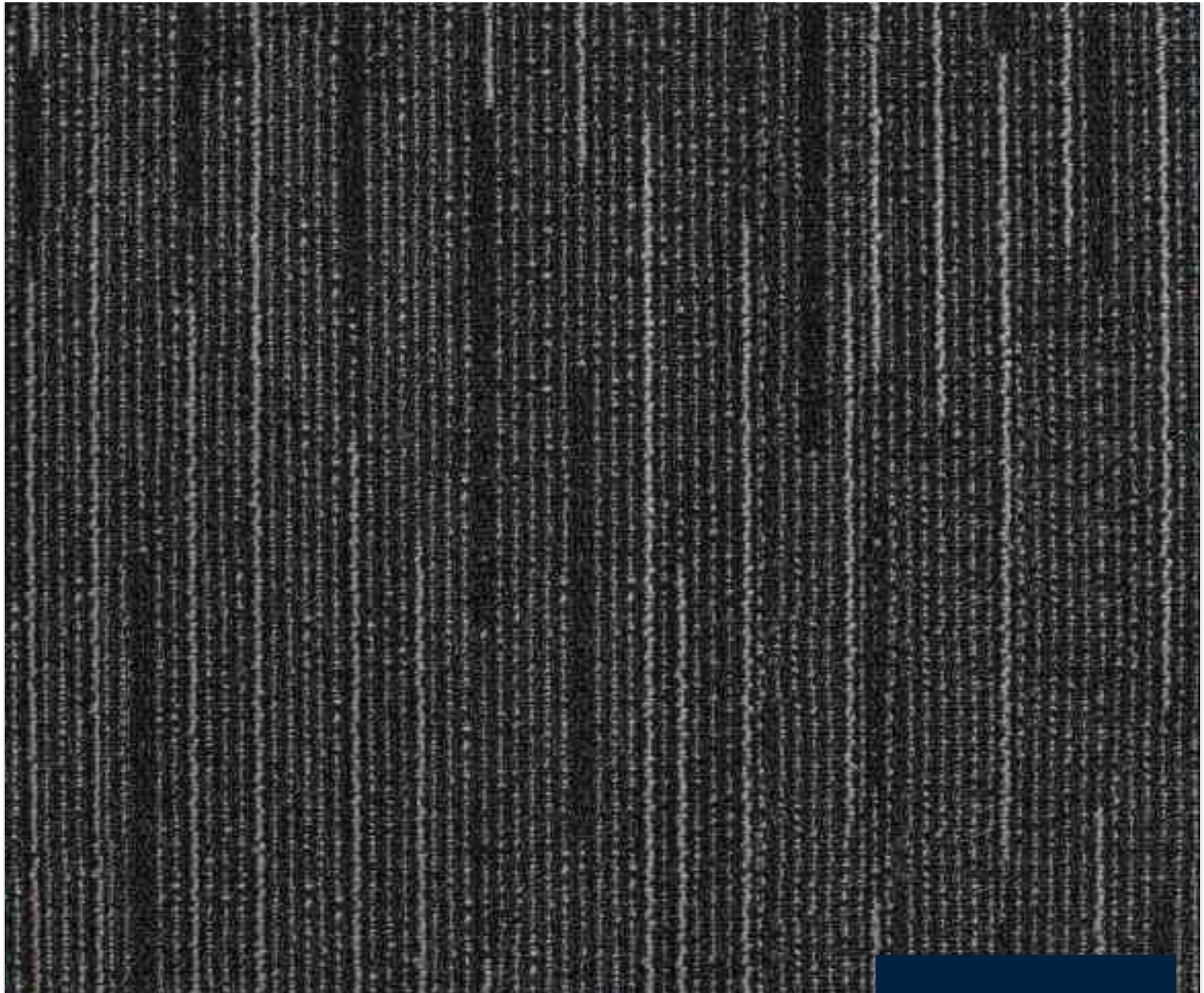
Construction	LOOP	Number of Tufts	232260 /m2
Pile Fiber Composition	100% Olefin	Tufting Gauge	1/12"
Dye Method	Solution Dyed	Primary Backing	Non-Woven
Pile Weight	800 g/m2	Secondary Backing	StableShield-100% Vinyl
Total Weight	4800 gm	Tile Size	50 x 50 cm
Pile Height	3.5mm	Pile Treatment	INVISTA Anti-Soil (On Order)
Total Tile Height	7.5 mm		

RUNWAY

50X50CM
SQUARE TILE

CARPET TILES

KINDLY CHECK OUR APP FOR QUANTITY AVAILABLE BEFORE ORDERING



CT RUNWAY 877 BLACK

Construction	LOOP	Number of Tufts	232260 /m2
Pile Fiber Composition	100% Olefin	Tufting Gauge	1/12"
Dye Method	Solution Dyed	Primary Backing	Non-Woven
Pile Weight	800 g/m2	Secondary Backing	StableShield-100% Vinyl
Total Weight	4800 gm	Tile Size	50 x 50 cm
Pile Height	3.5mm	Pile Treatment	INVISTA Anti-Soil (On Order)
Total Tile Height	7.5 mm		

RUNWAY

50X50CM
SQUARE TILE

CARPET TILES

KINDLY CHECK OUR APP FOR QUANTITY AVAILABLE BEFORE ORDERING



CT RUNWAY 878 SMOKE

Construction	LOOP	Number of Tufts	232260 /m2
Pile Fiber Composition	100% Olefin	Tufting Gauge	1/12"
Dye Method	Solution Dyed	Primary Backing	Non-Woven
Pile Weight	800 g/m2	Secondary Backing	StableShield-100% Vinyl
Total Weight	4800 gm	Tile Size	50 x 50 cm
Pile Height	3.5mm	Pile Treatment	INVISTA Anti-Soil (On Order)
Total Tile Height	7.5 mm		

RUNWAY

50X50CM
SQUARE TILE

CARPET TILES

KINDLY CHECK OUR APP FOR QUANTITY AVAILABLE BEFORE ORDERING



DIVINE[®]

COMPLETE CARPET SOLUTION

www.divineglobal.in

